

WATER CONTROL TECHNOLOGY™

WATER DIVERSION SYSTEM



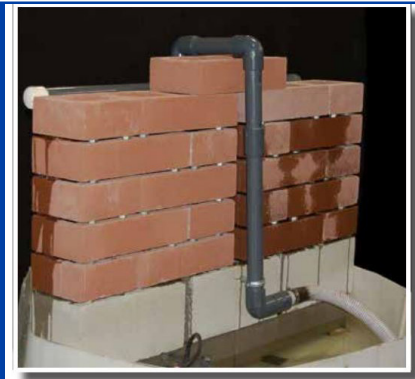
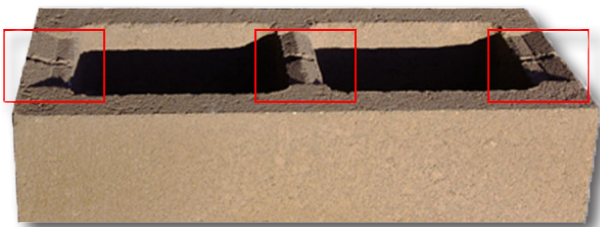
 **AMCON®**

WATER CONTROL TECHNOLOGY™

Water Control Technology (WCT™) is based on preserving the superior performance characteristics of concrete block while adding features that improve the ability of masonry wall assemblies to resist moisture penetration.

- WCT units feature integral drainage zones that direct moisture to the wall's drainage system
- No special installation techniques required = cost-effectiveness is assured
- WCT units are suitable for corners and ends to complete the system
- All units have integral water repellent in their mix design
- WCT units meet or exceed ASTM C90
- Ideal for both Single or Multi-Wythe Walls
- Offered in a wide variety of shapes and sizes
- Available nationwide! Contact your sales rep for more information

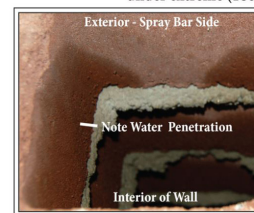
How does it work? Subtle changes to the top surfaces of each WCT block's webs to discourage water from crossing to the interior face shell. Corners and ends can use the WCT drainage zones without compromising aesthetics or performance. These innovations are accomplished with a block that is fully compliant with the concrete masonry unit standard, ASTM C90.



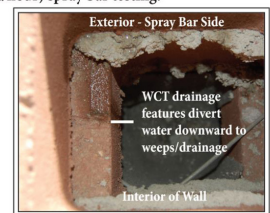
WCT units (on left) were spray bar tested with no mortar (just gaps) alongside a traditional block design (right) with a water flow rate equivalent to 180" of rain per hour for a half hour and then at a rate of 30" of rain for an additional 24 hours.

Result: The traditional block began to show moisture penetration to the interior surface after 11 seconds. The WCT block completed the 24 hour test without any evident moisture penetration to the interior surface of the wall.

Views below show the interior cores of WCT™ vs. Standard CMU under extreme (180 inch/hour) spray bar testing:



Standard CMU



WCT™ CMU

The WCT drainage zones divert water from traveling across joint areas and direct any moisture that penetrates the exterior shell downward into the drainage cores of the units so that the water can exit via the flashing and weep systems in the wall

LOCATIONS

AMCON • ST. CLOUD
2211 Highway 10 South
St. Cloud, MN 56304
320.251.6030

AMCON • ST. JOSEPH
8644 Ridgewood Road
St. Joseph, MN 56374
320.363.0905

AMCON • SIOUX FALLS
101 Industrial Road
Harrisburg, SD 57032
605.330.8481

TCC BLOCK • RAPID CITY
3292 Lien Street
Rapid City, SD 57702
605.342.6070

AMCON • MEDFORD
2173 NW 76th Street
Medford, MN 55049
507.451.7278

AMCON • ANNANDALE
12052 Highway 24
Annandale, MN 55302
320.274.5587



Available at select Amcon locations. For more information, contact your Amcon sales representative.



2025 Centre Pointe Blvd
Mendota Heights, MN 55120
651.688.9116 • amconconcreteproducts.com